

BIOMIMICRY AT HOME

How could you use these amazing inventions of nature to create something useful for humans?

1. Choose an animal or plant with a special trait that inspires you.
2. Brainstorm ideas for inventions inspired by that special trait. How could your invention be useful to humans? Could your invention help solve a problem?
3. Choose your favorite idea.
4. Plan your design. What will it look like? What materials will you use? How will you build it?
5. Build your design using materials found around your home.
6. Share your creation with someone!
7. If you want to share your creation with me, I would love to see it!
Have a parent/guardian help you email me a photo at naturehoods@childrensforestco.org

Animals and their Parts

1. Armadillo



Part: armored shell

Function: protection

2. Bird



Part: wings

Function: flight

3. Kangaroo



Part: pouch

Function: to carry their baby

4. Giraffe



Part: long neck

Function: to reach leaves on trees (food)

5. Tiger



Part: stripes

Function: camouflage

6. Duck



Part: webbed feet

Function: to swim better

7. Elephant



Part: long trunk

Function: to eat, drink, communicate, and reach things

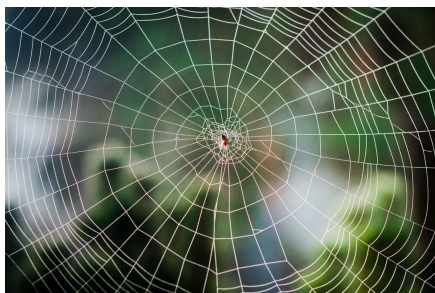
8. Rattlesnake



Part: rattle

Function: warning signal when threatened

9. Spider



Part: web

Function: to catch prey (food)

10. Bee



Part: stinger

Function: defense

Plants and their Parts

1. Rose



Part: sharp thorns

Function: protection

2. Cactus



Part: thick, fleshy parts

Function: to store water

3. Cactus



Part: sharp spines

Function: protection

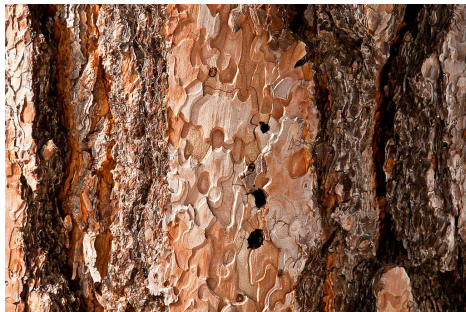
4. Sunflower



Part: bright, colorful petals

Function: to attract pollinators

5. Pine tree



Part: thick outer bark

Function: to protect the tree

6. Maple tree



Part: winged "helicopter" seeds

Function: to fly in the wind (seed dispersal)

7. Palm tree



Part: coconut (a fruit)

Function: to spread seeds by land or water (seed dispersal)

8. Fern



Part: coiled up young leaves (fiddleheads)

Function: protection of young, delicate leaves

9. Corpse Lily



Part: very stinky odor (smells like rotten meat!)

Function: to attract flies to pollinate (flies like rotten meat)

10. Venus fly trap



Part: snapping leaves

Function: to catch prey for food